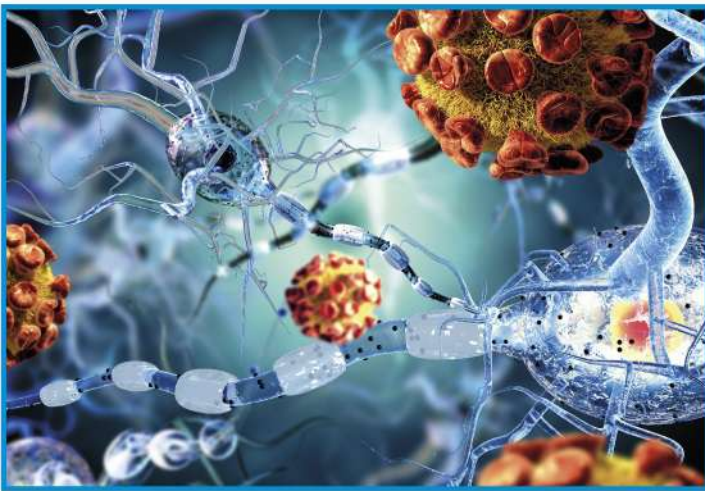
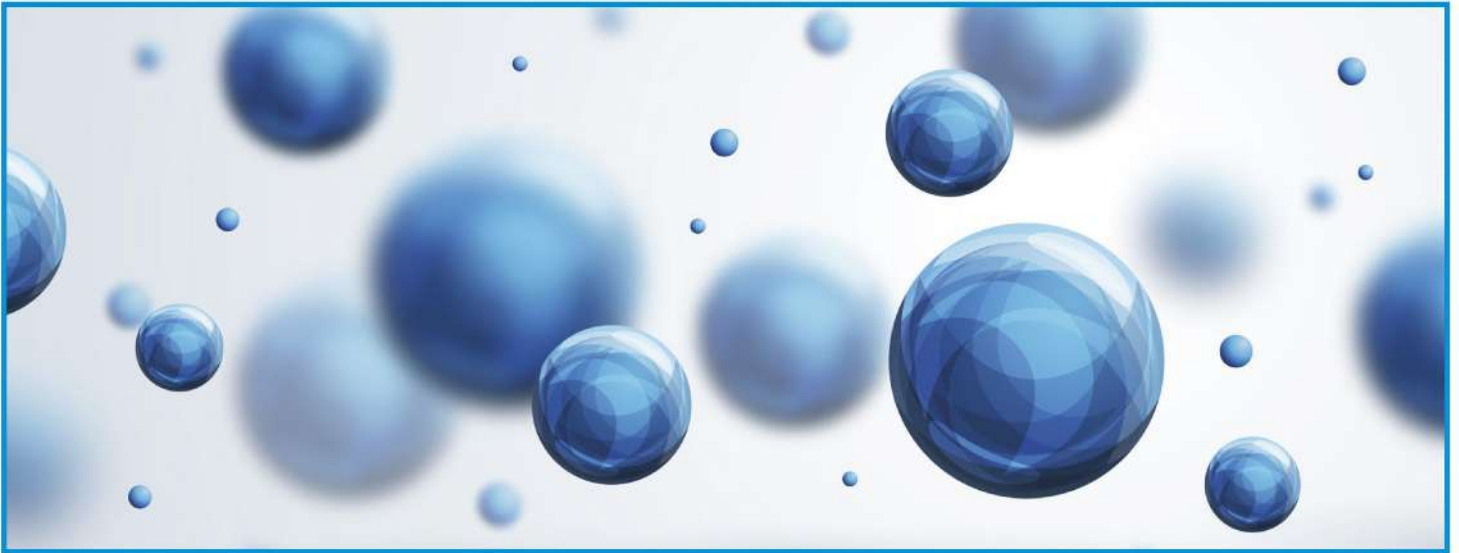


# CLIA

A chemiluminescence technology based on magnetic particles



Your IVD specialists!



# A RAPIDLY EXPANDING MENU

## BLOOD SCREENING MARKERS

### HEPATITIS B VIRUS

HBs Ag (code RASAG.CE)  
HBc ATotal Ab (code RABCAB.CE)

### HEPATITIS C VIRUS

HCV Ab (code RACVAB.CE)

### HIV

HIV Ab&Ag (code RAIVCOMB.CE)

### HTLV

HTLV I&II Ab (code RAHTLVAB.CE)

### SYPHILIS (*treponema pallidum*)

Syphilis Ab (code RASIAB.CE)

### CHAGAS

T.Cruzi Ab (code RATCAB.CE)

## EMERGING TROPICAL DISEASES

### DENGUE VIRUS **NEW!**

Dengue virus Ab (code RADENGVAB.CE)

### CHIUKUNGUNYA **NEW!**

Chiukungunya Ab (code RACHIKVAB.CE)

### ZIKA VIRUS **NEW!**

Zika Ab (code RAZIKVAB.CE)

## SEROLOGY

### TETANUS

Tetanus toxoid IgG (code RATETG.CE)

### HEPATITIS E VIRUS **NEW!**

HEV Ab (code RAEVAB.CE)

## PRENATAL SCREENING

### TOXOPLASMA GONDII

Toxoplasma IgM (code RATOXOM.CE)  
Toxoplasma IgG (code RATOXOG.CE)

### RUBELLA VIRUS

Rubella IgM (code RARUBM.CE)  
Rubella IgG (code RARUBG.CE)

### CYTOMEGALOVIRUS

Cytomegalovirus IgM (code RACMVM.CE)  
Cytomegalovirus IgG (code RACMVG.CE)

### HERPES SIMPLEX VIRUS

HSV1 IgM (code RAHSV1M.CE)  
HSV1 IgG (code RAHSV1G.CE)  
HSV2 IgM (code RAHSV2M.CE)  
HSV2 IgG (code RAHSV2G.CE)  
HSV1&2 IgM (code RAHSV1&2.CE)  
HSV1&2 IgG (code RAHSV1&2G.CE)

## AUTOIMMUNITY

IgG anti-SSB (code RASSB.CE)  
IgG anti-SSA52 (code RASSA52.CE)  
IgG anti-SSA60 (code RASSA60.CE)  
IgG anti-RNP (code RARNP.CE)  
IgG anti-Sm (code RASM.CE)  
IgG anti-JO1 (code RAJO1.CE)  
IgG anti-SCL70 (code RASCL70.CE)

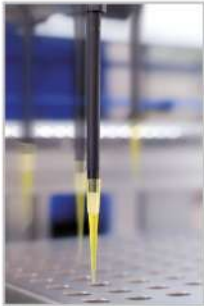
## COMING SOON

- HAV Ab •HBs Ab •HDV Ab •HDV IgM •Malaria Ab •dsDNA Ab
- Transglutaminase IgA&IgG •Gliadin deaminated IgA&IgG





# A Chemiluminescence System Designed for Excellence



Sample Disposable Tips (Cost effective)

2D Matrix Code Label for:  
- Assay identification  
- Lot identification  
- Expiration date  
- Calibration values



User friendly Touch Screen



Sample Management

Refrigerated Reagent Loading & Storage Area

2D Barcode Reagent Identification



Continuous loading  
72-90 sample tube lodging  
Sample volume 10-200 µl  
Primary tubes (100-160 mm.)

No carry over  
Clot & sample volume detection  
Barcode sample identification



## ASSAY CARTRIDGE:

- Include calibrators and controls
- All reagents vials are sealed with caps to avoid spilling
- Stability of 4 weeks once opened



# SARA

## Fully automated bench top analyzer with continuous random access

### TECHNICAL SPECIFICATIONS

Throughput	Up to 120 tests/hour. First result after about 15 min (assay dependent) Then 1 result/in 30 sec.
Mode of operation	Random Access including Continuous Loading and STAT
Sample identification	Bar code reader for samples identifying 2D matrix code
Sample Dispensation	Standard universal disposable tips to avoid carry-over Liquid level sensor
Calibration	Calibrator included into the cartridge for assay calibration Calibration Curve memorized on RFID/2D bar code label
Controls	Liquid ready-to-use included in the kit box
Operating System	Touch screen on board Password for entrance into the system Color-coded graphical user interface Ergonomic flat, low-glare, LCD
Configuration	Bench top, compact design
Dimension and weight	Height 80 cm. - Width 160 cm. - Depth 70 cm. - Weight +/- 200 kg.
Certification	CE (IVD Directive 98/79)

**MADE IN ITALY**

For more information visit: [www.diapro.it](http://www.diapro.it)



Dia.Pro Diagnostic Bioprobes S.r.l.  
Via Carducci, 27 - 20099 Sesto San Giovanni (MI) - Italy  
Tel. +39 02 27.00.71.61/64.50 Fax +39 02 44386771  
<http://www.diapro.it> - email: [info@diapro.it](mailto:info@diapro.it)

EN ISO 13485:2013 Certified

BRO-CLIA Rev.1019