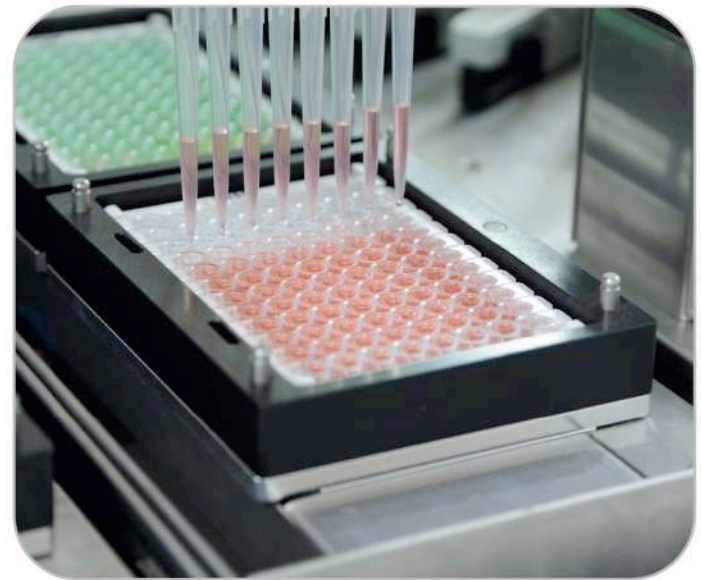
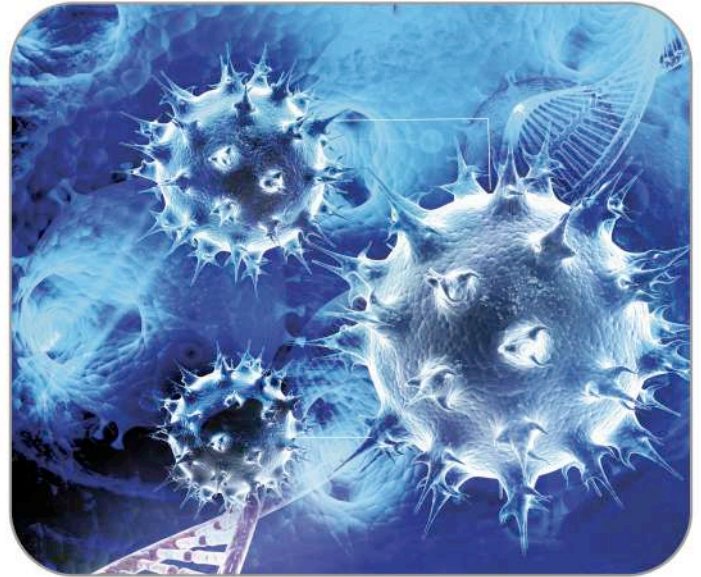
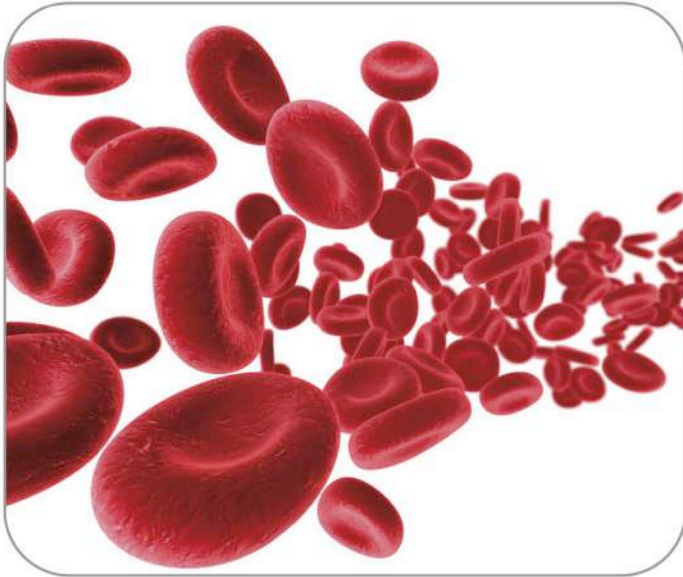


ELISA

A complete solution for diagnostic laboratory testing and blood screening



Your IVD
specialists!



BLOOD SCREENING

The sole manufacturer of a **COMPLETE ELISA** kit panel
for Blood Bank screening requirements

HEPATITIS B VIRUS

HBs Ag one version ULTRA

Fourth generation Enzyme Immunoassay
for the determination of Hepatitis B
surface Antigen or HBs Ag (REC included)

HBc Ab

Determination of total antibodies
to Hepatitis B core Antigen

HEPATITIS C VIRUS

HCV Ab

Version 4.0 Immunoassay
for the determination of total antibodies

HTLV

HTLV I&II Ab Version ULTRA

Third generation Enzyme Immunoassay
for the determination of antibodies to
Human T-Cell Lymphotropic Virus type I&II

HIV

HIV 1,2 & 0 Ab&Ag (HIV Ab&Ag)

Fourth generation Enzyme Immunoassay
for the determination of antibodies to
HIV type 1&2&0 and P24 HIV-1 Antigen

MALARIA

Malaria Ab

Third Generation Enzyme Immunoassay
for the determination of total antibodies
of Plasmodium species (falciparum, ovale and vivax)

TRYPANOSOMA CRUZI (Chagas)

T. Cruzei Ab

Third Generation Immunoassay
for the determination of total antibodies

TREPONEMA PALLIDUM (Syphilis)

Syphilis Ab

"Double sandwich" (ULTRA) immunoassay for the
determination of total antibodies.

Available in one short step protocol

(Syphilis Ab One Version ULTRA)

or in two steps protocol optimized for automation

(Syphilis Ab Version ULTRA)

Also available...

DENGUE VIRUS

DENGUE Virus NS1 Ag

Determination of Dengue Virus NS1 Antigen

HEPATITIS E VIRUS

HEV Ab Version ULTRA

"Double sandwich" (ULTRA) immunoassay for the
determination of total antibodies





A wide panel of CE certified Serology kits

HELICOBACTER PYLORI

HP IgG

Quantitative/qualitative determination of IgG antibodies

HP IgM

Quantitative/qualitative determination of IgM antibodies

HP IgA

Quantitative/qualitative determination of IgA antibodies

CagA IgA

Quantitative/qualitative determination of IgA antibodies to Helicobacter Pylori cytotoxin associated gene A antigen

CagA IgG

Quantitative/qualitative determination of IgG antibodies to Helicobacter Pylori cytotoxin associated gene A antigen

HP Ag

Quantitative/qualitative determination of Helicobacter Pylori Antigen in human stools (respective extraction kit available)

CHLAMYDIA

Chlamydia Pneumoniae IgA

Qualitative determination of IgA antibodies

Chlamydia Pneumoniae IgG

Qualitative determination of IgG antibodies

Chlamydia Pneumoniae IgM

Qualitative determination of IgM antibodies

Chlamydia Trachomatis IgA

Qualitative determination of IgA antibodies

Chlamydia Trachomatis IgG

Qualitative determination of IgG antibodies

Chlamydia Trachomatis IgM

Qualitative determination of IgM antibodies

COXSACKIE B VIRUS

CoxB IgG

Determination of IgG antibodies

CoxB IgM

Determination of IgM antibodies

EPSTEIN BARR VIRUS

EBV VCA IgA

Quantitative/qualitative determination of IgA antibodies to Epstein Barr Virus Capsidic Antigen

VCA IgG

Quantitative/qualitative determination of IgG antibodies to Epstein Barr Virus Capsidic Antigen

VCA IgM

"Capture" system quantitative/qualitative determination of IgM antibodies to Epstein Barr Virus Capsidic antigen

EBNA IgG

Quantitative/qualitative determination of IgG antibodies to Epstein Barr Virus Nuclear Antigen

EBNA IgM

Qualitative determination of IgM antibodies to Epstein Barr Virus Nuclear Antigen (EBNA)

Ea IgG

Quantitative/qualitative determination of IgG antibodies to Epstein Barr Virus Early Antigen

Ea IgM

Qualitative determination of IgM antibodies to Epstein Barr Virus Early Antigen (Ea)

EBV Avidity Test*

Determination of "Avidity" of IgG antibodies

MENINGITIS

Meningitis IgG

Determination of IgG antibodies

MEASLES VIRUS

Measles Virus IgG

Semi-quantitative determination of IgG antibodies

Measles Virus IgM

Qualitative determination of IgM antibodies

TETANUS TOXOID

TETOX IgG

Quantitative determination of IgG antibodies to Tetanus toxoid

*NOT CE

HEPATITIS



A UNIQUE panel of CE certified kits for the diagnosis of Viral Hepatitis in human serum and plasma

HEPATITIS A

HAV Ab

Determination of total antibodies

HAV IgM

"Capture" Enzyme Immunoassay for the determination of IgM class antibodies

HEPATITIS B

HBc Ab

Determination of total antibodies to Hepatitis B core Antigen

HBc IgM

"Capture" Enzyme Immunoassay for the quantitative/qualitative determination of IgM class antibody to Hepatitis B Virus core Antigen

HBs Ab

Qualitative/quantitative determination of total antibodies to Hepatitis B surface Antigen

HBs Ag one version ULTRA

Fourth generation Enzyme Immunoassay for the determination of Hepatitis B surface Antigen

HBs Ag Confirmation

Set of Reagents for the confirmation of HBs Ag positivity

HBe Ag&Ab

Determination of Hepatitis B Virus "e" Antigen and Antibody

HEPATITIS C

HCV Ab

Version 4.0 Enzyme Immunoassay for the determination of total antibody

HCV IgM

Quantitative/qualitative determination of IgM antibodies

HCV Ab Confirmation

Microstrip based Enzyme Immunoassay for the confirmation of HCV Ab positivity

HEPATITIS D

HDV Ab

Competitive Immunoassay for the qualitative determination of total antibodies

HDV Ag

Determination of Hepatitis Delta Virus

HDV IgM

"Capture" Enzyme Immunoassay for the determination of IgM antibodies

HEPATITIS E

HEV Ab Version ULTRA

"Double sandwich" (ULTRA) immunoassay for the determination of total antibodies

HEV IgG

Determination of IgG antibodies

HEV IgM

Determination of IgM antibodies



A complete Panel of CE certified Prenatal Screening kits

CYTOMEGALOVIRUS

CMV IgG

Quantitative/qualitative determination of IgG antibodies

CMV IgM

"Capture" Enzyme Immunoassay
for the determination of IgM antibodies

CMV Antibody Avidity Test*

Determination of "Avidity" of IgG class antibodies

RUBELLA VIRUS

RUB IgG

Quantitative/qualitative determination of IgG antibodies

RUB IgM

"Capture" Enzyme Immunoassay
for the determination of IgM antibodies

RUB Antibody Avidity Test*

Detection of the avidity of IgG antibodies

HUMAN PAPILLOMA VIRUS

Papilloma Virus IgG

Quantitative/qualitative determination
of IgG antibodies (R.U.O.)

PARVO VIRUS B19

Parvovirus B19 IgG

Quantitative/qualitative determination of IgG antibodies

Parvovirus B19 IgM

Qualitative determination of IgM antibodies

TOXOPLASMA GONDII

Toxo IgG

Quantitative/qualitative determination of IgG antibodies

Toxo IgM

"Capture" Enzyme Immunoassay
for the determination of IgM antibodies

Toxo Antibody Avidity Test*

Determination of "Avidity" of IgG class antibodies

HERPEX SIMPLEX VIRUS

HSV1 IgG

Quantitative/qualitative determination of
IgG antibodies to Herpes Simplex Virus type 1

HSV1 IgM

"Capture" Enzyme Immunoassay for the determination
of IgM antibodies to Herpes Simplex Virus type 1

HSV2 IgG

Quantitative/qualitative determination of
IgG antibodies to Herpes Simplex Virus type 2

HSV2 IgM

"Capture" Enzyme Immunoassay for the determination
of IgM antibodies to Herpes Simplex Virus type 2

HSV1&2 IgG

Quantitative/qualitative determination of
IgG antibodies to Herpes Simplex Virus type 1&2

HSV1&2 IgM

"Capture" Enzyme Immunoassay for the determination
of IgM antibodies to Herpes Simplex Virus types 1&2

*NOT CE



A wide panel of CE certified Autoimmune disease kits

IgG anti SSB

Quantitative determination of IgG autoantibodies against SSB autoantigens

IgG anti SSA 52 KD

Quantitative determination of IgG autoantibodies against SSA-52KD autoantigens

IgG anti dsDNA

Quantitative determination of IgG autoantibodies against double stranded DNA (dsDNA)

ANA Screening IgG

Qualitative determination of IgG antibodies to anti Nuclear Antigens

ANA 8 parameters profile

Qualitative determination of IgG antibodies to Ro/SSA60KDa, Ro/SSA52KDa, La/SSB, RNP-68, Sm, Scl-70, CENP-B

ENA Screening IgG

Qualitative determination of IgG antibodies to Extractable anti Nuclear Antigens

ENA 6 parameters profile

Qualitative determination of IgG antibodies against Ro/SSA, La/SSB, RNP-68, Sm, Scl-70, Jo-1

IgG anti SSA 60 KD

Quantitative determination of IgG autoantibodies against SSA-60KD autoantigens

IgG anti U1-snRNP 68

Quantitative determination of IgG autoantibodies to RNP-68KDa

IgG anti Sm

Quantitative determination of IgG autoantibodies against Sm autoantigens

IgG anti Jo-1

Quantitative determination of IgG autoantibodies against Jo-1 autoantigens

IgG anti Centromere B

Quantitative determination of IgG autoantibodies against Centromere B autoantigens

IgG anti Scl-70

Quantitative determination of IgG autoantibodies against Scl-70 autoantigens



A complete Panel of CE certified tests for the diagnosis of serological tropical diseases

DENGUE VIRUS

Dengue Virus IgG

Qualitative/semi-quantitative
determination of IgG antibodies

Dengue Virus IgM

Qualitative determination of IgM antibodies

Dengue Virus NS1 Ag

Determination of Dengue Virus NS1 Antigen

WEST NILE VIRUS

West Nile Virus IgG

Detection of IgG antibodies

West Nile Virus IgM

Detection of IgM antibodies

CHIKUNGUNYA VIRUS

Chikungunya IgG (CHIKV IgG)

Detection of IgG antibodies

Chikungunya IgM (CHIKV IgM)

Qualitative determination of IgM antibodies

YELLOW FEVER VIRUS

Yellow Fever Virus IgG

Detection of IgG antibodies
for the follow-up of the vaccination

TRYPANOSOMA CRUZI (Chagas)

T. Cruzi Ab

Third generation Enzyme Immunoassay
for the determination of total antibodies
to Trypanosoma Cruzi

MALARIA

Malaria Ab

Third Generation Enzyme Immunoassay
for the determination of total antibodies
to Plasmodium species (falciparum, ovale and vivax)

ZIKA VIRUS

ZIKA IgG (ZIKV IgG)

Qualitative determination of IgG antibodies

ZIKA IgM (ZIKV IgM)

Qualitative determination of IgM antibodies

ZIKA IgG Avidity Test (ZIKV IgG Avidity Test)

Determination of the avidity of IgG antibodies

DIA.BLOoD

FULLY AUTOMATED 9 MICROPLATE ANALYZER



MAIN FEATURES

- ✓ HIGH THROUGHPUT
- ✓ DISPOSABLE TIPS (STANDARD)
- ✓ 9 INDEPENDENT INCUBATORS
- ✓ 3 INDEPENDENT WASHERS
- ✓ 8 CHANNEL INDEPENDENT MANIFOLD
- ✓ PRESSURE SENSOR & CLOT DETECTOR
- ✓ BAR-CODE IDENTIFICATION
- ✓ CHEMILUMINESCENCE READER (OPTIONAL)
- ✓ DISPENSING VERIFICATION SYSTEM (OPTIONAL)

ANALYZERS

- A) DIA.BLOoD:
Optical Density Reader
- B) DIA.BLOoD DUO:
Double Reading System Optical
Density & Relative Light Unit (CLIA)

CE IVD 98/79/EC
CB Certified

MADE IN ITALY



Dia.Pro Diagnostic Bioprobes S.r.l.
Via Carducci, 27 - 20099 Sesto San Giovanni (MI) - Italy
Tel. +39 02 27.00.71.61/64.50 Fax +39 02 44386771
<http://www.diapro.it> - email: info@diapro.it

EN ISO 13485 Certified

BRO-ELISA Rev. 1219